

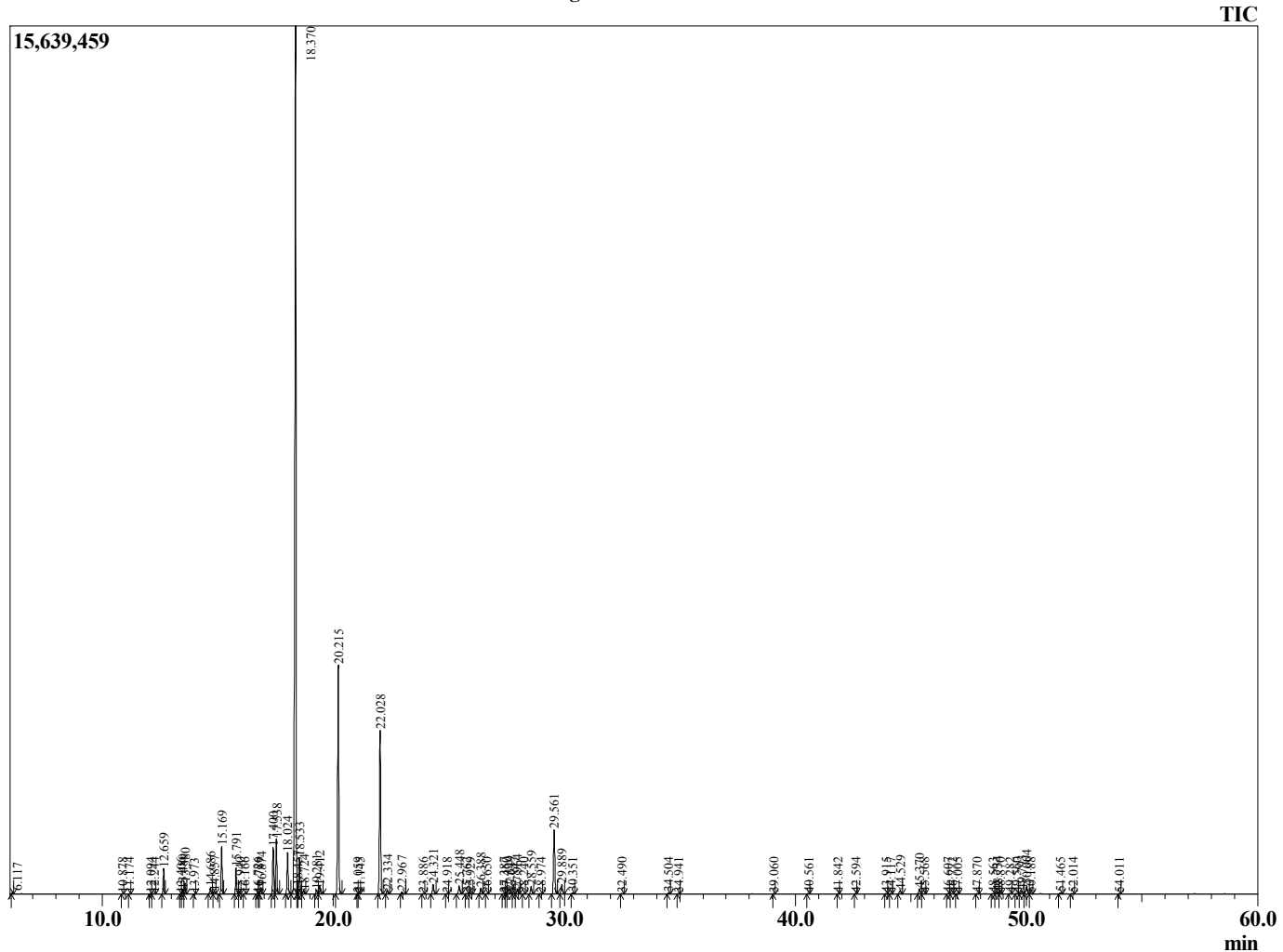
Sample Information

Analyzed : 8/23/2019 4:24:43 PM
 Sample Type : Essential Oil
 Sample Name : Citrus aurantifolia
 Injection Volume : 0.10

Lime Distilled
 Lot# MEZ18-ZW
 Country: Mexico



Chromatogram Citrus aurantifolia



R.Time	Name	Area%
6.117	Limediene	0.08
10.878	Nonane	0.02
11.174	Bornylene	0.02
12.094	Tricyclene	0.02
12.244	alpha-Thujene	0.04
12.659	alpha-Pinene	1.13
13.406	Unidentified	0.02
13.480	alpha-Fenchene	0.19
13.580	Camphene	0.50
13.973	Unidentified	0.01
14.686	Bois de Rose oxide	0.33
14.857	Sabinene	0.12
15.169	beta-Pinene	2.32
15.791	Myrcene	1.30
15.940	Unidentified	0.02
16.166	Unidentified	0.04
16.726	Pseudolimonene	0.04
16.789	Unidentified	0.04
16.874	alpha-Phellandrene	0.35
17.400	1,4-Cineole	2.46
17.538	alpha-Terpinene	2.83
18.024	para-Cymene	2.25
18.370	Limonene	52.02
18.457	beta-Phellandrene	0.26
18.533	1,8-Cineole	1.83
18.724	cis-beta-Ocimene	0.18
19.281	2,2-dimethyl-5-(1-methyl-1-propenyl)-tetrahy	0.23
19.412	trans-beta-Ocimene	0.44
20.215	gamma-Terpinene	12.54
21.059	Unidentified	0.02
21.145	Pinol	0.02
22.028	Terpinolene	9.04
22.334	para-Cymenene	0.20
22.967	Linalool	0.14
23.886	Unidentified	0.02
24.321	alpha-Fenchol	0.58
24.918	allo-Ocimene	0.01
25.448	Terpin-3-en-1-ol	0.51
25.762	Unidentified	0.02
25.929	Unidentified	0.06
26.388	Unidentified	0.34
26.650	cis-Ocimenol	0.02
27.387	Isoborneol	0.03
27.460	Unidentified	0.02
27.649	Unidentified	0.09
27.847	delta-Terpineol	0.02
27.964	Borneol	0.25
28.240	trans-Pinocarveol	0.01
28.559	Terpinen-4-ol	0.45
28.974	para-Cymen-8-ol	0.04
29.561	alpha-Terpineol	3.89
29.889	gamma-Terpineol	0.57
30.351	Decanal	0.06
32.490	Neral	0.05
34.504	Geranial	0.06
34.941	Unidentified	0.02

R.Time	Name	Area%
39.060	delta-Elemene	0.02
40.561	Neryl acetate	0.02
41.842	Geranyl acetate	0.01
42.594	beta-Elemene	0.01
43.915	Dodecanal	0.02
44.117	cis-alpha-Bergamotene	0.02
44.529	beta-Caryophyllene	0.22
45.370	trans-alpha-Bergamotene	0.31
45.568	Unidentified	0.02
46.607	trans-beta-Farnesene	0.02
46.772	alpha-Humulene	0.03
47.005	beta-Santalene	0.02
47.870	Unidentified	0.04
48.563	Unidentified	0.04
48.734	delta-Selinene	0.10
48.870	Unidentified	0.02
49.282	alpha-Selinene	0.02
49.560	cis-alpha-Bisabolene	0.03
49.793	(E,E)-alpha-Farnesene	0.18
50.004	beta-Bisabolene	0.54
50.188	Unidentified	0.03
51.465	alpha-Maaline	0.08
52.014	Selina-3,7(11)-diene	0.03
54.011	Caryophyllene alcohol	0.02
		100.00